



# CERAKOTE<sup>®</sup>

---

AN INNOVATION OF **NIC INDUSTRIES, INC.**

866.774.7628 White City, Oregon 97503

## ELITE & H-SERIES TRAINING MANUAL

---

### TRAINING VIDEO

CLICK THE LINK ABOVE TO WATCH THE  
ELITE & H-SERIES TRAINING VIDEO

# ELITE & H-SERIES TRAINING MANUAL

---

PHASE 1: DISASSEMBLY 02

PHASE 2: DEGREASE 03

---

PHASE 3: MASKING 04

PHASE 4: SANDBLASTING 05

PHASE 5: RACKING 06

PHASE 6: GAS OUT 07

---

PHASE 7: COATING PREPARATION 08

PHASE 8: SPRAYING 10


---

PHASE 9: CURE SCHEDULE 14

---

SUPPLIES AND EQUIPMENT 16

TRAINING PROGRAM 18



# ELITE & H-SERIES

**C**erakote® Ceramic Coatings are designed for professionals and should be applied by Cerakote Certified Applicators and coating professionals with proper training and equipment. This training manual is intended to be used as a supplemental guide for certified and professional applicators. It is critical to follow all instructions in this manual. If for any reason you are not willing to, or cannot follow the steps in this manual, do not attempt to coat any product using Cerakote®, or any other NIC product. If you have any questions, please contact us.

***Cerakote® H-300/H-301 Clear Coatings: Please refer to the appropriate product specific application guide at Cerakote.com***

If you are coating parts that will sustain temperatures greater than 500°F or parts that cannot be cured in an oven, refer to the high temperature coatings section at Cerakote.com. Please refer to product specific application guide at Cerakote.com.





# MASKING

Begin by plugging and/or masking off any areas that you do not want coated.

## NOTE

Improper masking with certain mechanical parts may cause tolerance or functionality issues.



Plug off any areas that you do not want coated.



Mask any areas that you do not want coated.



Trim any excess masking tape.

## PHASE 4

# SANDBLASTING

Sandblast the parts with #100 grit aluminum oxide or garnet sand at 80 to 100 PSI. Lightly etch blast 30-40 PSI non-metal parts such as: carbon fiber, fiberglass, plastics, or polymers.

- X DO NOT** hand sand parts as this will not yield a sufficient profile for optimal coating adhesion.
- X DO NOT** use any type of round blasting media such as glass beads or steel shot. Round media will dimple the surface rather than etch it and will not yield a sufficient blast profile for optimum coating adhesion.
- X DO NOT** use sand or aluminum oxide that has been previously used to clean dirty, greasy, or oily parts. Doing so will contaminate your blast media and cause possible adhesion issues or defects in the finish.



< Sandblast parts and strive for an even blast pattern.

Use the Shake N Blast Canister > (Item SE-221) for small parts.

## TIPS FOR SANDBLASTING



If the part's surface retains a shiny appearance after sand blasting, you have not blasted enough. To promote maximum coating adhesion, continue to sand blast parts striving for an even blast pattern.

Too coarse of sand or aluminum oxide will profile the parts surface too deep and won't create a uniform finish.

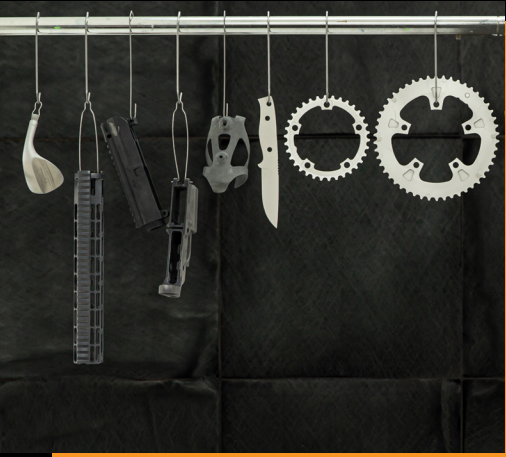
Anodized parts will require sand blasting, however it is not necessary to completely remove the anodized finish. It is recommended to lightly etch blast at 30-40 PSI. Anodized parts that have been sufficiently blasted should have a dull, matte appearance.

# RACKING



## REMEMBER

Always wear powder-free latex or nitrile gloves when handling parts.  
*Avoid touching parts with your bare hands.*



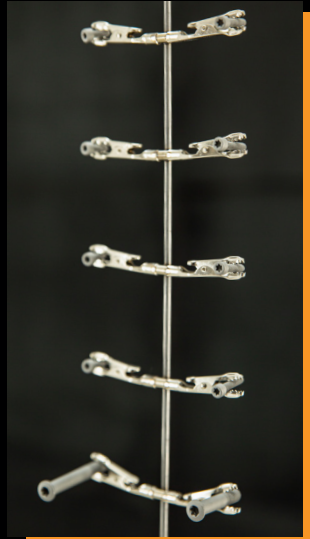
Metal hooks are ideal for racking larger parts.

## TIPS FOR RACKING SMALL PARTS

- / For smaller screws or bolts, clamp gator clip on threads.
- / For other small parts, clamp gator clip on a no-show surface.
- / Heaviest pieces are placed at the bottom of the rack for better part stability.
- / Space parts accordingly for even coverage.

Hang or otherwise fixture your parts so that you can access all the surface areas with your HVLP/LVLP spray gun (Item SE-138).

A variety of metal hooks (Item SE-195) in multiple sizes are ideal for racking larger parts, while thin wire or a small parts rack (Item SE-346 and SE-347) are ideal for fixturing screws, pins and other small parts.



Small parts rack shown above.



Gas out will evaporate any remaining solvents from the degreasing phase while also drawing out any possible trapped oils or contaminants. Heat metal parts in a convection style oven at 300°F (149°C) for 60 minutes.

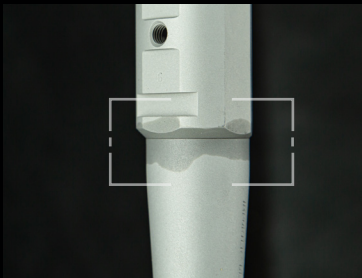
## CAUTION

Plastics, polymers, carbon fiber and fiberglass should be gassed out at a lower temperature, generally between 150°-180° F (65°-82° C) for 60 minutes.

*If you're unsure as to the temperature stability of your non-metal parts, contact the manufacturer prior to gassing-out and curing.*



Oil on slide shown.



Oil in seam shown

## SEE OIL?

If you see any oil residue or other indications that contaminants were drawn to the surface of the part(s); re-clean the part(s) by repeating phases 2, 4 and 6 (degrease, sandblast, gas out).

This step will need to be repeated until no oil residue is visible after gas out. When the part(s) are free of oil following the final gas out process, proceed to Phase 7 Coating Prep.

## CAUTION

*Allow parts to cool to room temperature prior to re-degreasing.*

# COATING PREPARATION 4 STEP PROCESS

Begin by agitating the Cerakote bottle **until the coating has been mixed for 5-10 minutes**. We recommend a paint shaker (Item SE-369) for pints, quarts, and gallons. For testers, agitating by hand is sufficient.

Determine how much Cerakote you intend to use before adding catalyst (see Table 1 Pg. 9) **Pot life for mixed Cerakote is approximately 1-2 hours in a sealed glass graduated cylinder, beaker or aluminum spray gun cup**. Mix only what you intend to use to avoid coating waste.

## IMPORTANT!

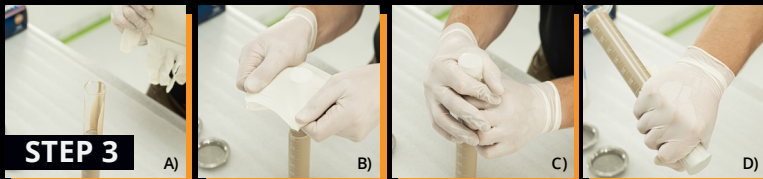
Do not mix Cerakote and catalyst in noncompatible plastic containers, as this may compromise the integrity of the coating. Compatible plastics for mixing Cerakote: Polypropylene (PP), High-density polyethylene (HDPE) or Low-density polyethylene (LDPE).



- 1) Pour the desired quantity of Cerakote into a Glass Graduated Cylinder (Item SE-147) or Beaker (Item SE-259).



- 2) Add the catalyst. See Table 1 Pg. 9 to determine Cerakote to catalyst ratio for finish type.



- 3) (A) Stretch a clean, powder-free latex glove. (B) Place glove over graduated cylinder. (C) Tightly seal glove over graduated cylinder. (D) Thoroughly mix coating by shaking for thirty seconds to one minute.

## TIPS FOR AGITATION & STRAINING:

- ✓ Frequent agitation of coating in the spray gun is recommended.
- ✓ Colors with a high metallic content or high viscosity will require a 100-mesh strainer.
- ✓ Non-metallic and low viscosity colors will require a 150-325 mesh strainer.

## MIXING PROPORTIONS

If proportions of Cerakote to catalyst are incorrect, or the combination of product and catalyst are not thoroughly mixed, the quality and performance of the coating will be adversely affected.



## NOTE

All Cerakote bottle labels list the recommended strainer size.

In-Cup 100 Mesh Strainer (Item SE-275)

In-Cup 150 Mesh Strainer (Item SE-276)

In-Cup 325 Mesh Strainer (Item SE-277)

- 4) Pour coating through the appropriate mesh strainer into the spray gun cup.

## CLEANING EQUIPMENT

Clean all containers and equipment with acetone or a compatible degreasing solvent. A Cerakote Wash Bottle (Item SE-257) and Cylinder Bottle Brush (Item SE-389) are helpful tools for cleaning.

**TABLE 1: ELITE & H-SERIES CATALYST RATIOS**

FINISH	CATALYST RATIO
Lower Gloss	24:1
Standard Gloss	18:1
Higher Gloss	12:1

# SPRAYING

**CAUTION:** Spray in a well-ventilated, well-lit spray booth. Wear a respirator, protective gloves & safety glasses. Refer to the SDS for additional safety and handling information at Cerakote.com.

## BEFORE SPRAYING: NOTES & TIPS

- / Check that all plugged and masked areas are secure. Remember Cerakote is applied very thin, and most areas do not require masking. If you are unsure, contact Cerakote for assistance.
- / Ensure all parts to be coated are hung securely to avoid contact during the application process.
- / Do not coat mechanical parts that may cause tolerance or functionality issues.
- / During the application process, ensure that the coating is properly agitated. Due to the high level of solids, Cerakote settles quickly and should be agitated frequently.
- / Do not begin the spraying process unless you are able to complete the curing or flash curing process within 1-2 hours following the initial application. Letting parts sit uncured or un-flashed for extended periods of time can reduce the performance of the finished product.

## SPRAY GUN SETTINGS

Figure 1



### 1. PATTERN ADJUSTMENT KNOB

- Controls spray pattern of atomized fluid.
- Adjust in (Clockwise) for detailed circular pattern.
- Adjust out (Counter-Clockwise) for larger oval pattern.
- Use small circular pattern with lower air pressure for detailed work.
- Use large pattern for large areas of coverage.



### 2. FLUID ADJUSTMENT KNOB

- Controls the amount of fluid atomized through the gun.
- Adjust in (Clockwise) for fine or detailed spray areas.
- Adjust out (Counter-Clockwise) for full fluid usage.
- This knob will affect the spray pattern when adjusted in or out.
- Use to adjust desired material flow.



### 3. AIR ADJUSTMENT KNOB

- Regulates inlet air pressure.
- Too low of air pressure will cause splatter.
- Too high of air pressure will cause dry spray.

## TESTING SPRAY GUN SETTINGS

Practice spraying on an easel pad to adjust the spray pattern and to practice your spraying technique. Adjust the spray gun to achieve a 2-3" oval fan pattern, while spraying from a distance of 3-5". For hard to reach areas, adjust your spray gun settings to achieve a 1" oval with moderate sized splatter.



Testing spray gun settings

A good practice exercise is to spray and cure a few machine screws and matching nuts. You should be able to screw the nut onto the machine screw without difficulty. If you can't, you may be spraying too heavily. For a more precise measurement of coating thickness, we recommend using a Cerakote Mil Thickness Gauge (Item SE-321).

## BEFORE SPRAYING YOUR PART(S)

Blow off the parts with dry compressed air to make sure there is no trapped media in holes, seams or pockets. Blasting media left behind will cause surface defects. Make sure the parts are at room temperature before application.

Start spraying in the most difficult areas of each part, then progress and finish to the easier areas. This should help avoid runs and thin spots. For best application results, adjust PSI settings as follows: H-Series 20-25 PSI, Elite Series 25-30 PSI.



Before spraying, blow off all your parts.

## APPLYING CERAKOTE

Strive for even coverage when spraying. The coating should appear wet but not so wet that the coating will run. Cerakote will be wet to the touch until it is oven cured.



When spraying, part should appear wet.

For H-Series, coating thickness will be 1-2 mils and Elite Series is .6 - 1.1 mils. This is generally achieved with 2 - 3 coats. The number of coats applied will vary depending on the color's standard mil thickness range, spray gun settings and spraying technique. Refer to the TDS for the standard mil thickness range specific to the color or series.

# SPRAYING CONTINUED

## NOTE

If any coated parts are touched before the curing phase, they will need to be refinished. It is recommended to remove wet Cerakote with a degreasing solvent such as Acetone or break parts cleaner, followed by drying the parts in an oven until the residual coating has become tack free (dry to the touch). Sandblast to remove any contaminants and re-spray.

## WET APPLICATION



## TIPS FOR APPLICATION

- / Use an HVLP/LVLP spray gun with 0.8mm tip.  
Recommended: IWATA LPH-80 (Item SE-138).
- / Spray with a 2-3" oval fan pattern from a distance of 3-5".
- / H-Series: 20-25 PSI (operating pressure).
- / Elite Series: 25-30 PSI (operating pressure).
- / Use proper lighting to assist in seeing coating wet out.

## NOTE

Allow parts to sit ambiently for a minimum of fifteen minutes following the application. Cerakote will still be wet to the touch until it is oven cured.

**DRY SPRAY:** The most common application error is not getting enough solvent transfer.

Dry spray has a rough, sandpaper like appearance and is typically caused by:

- / Spraying too far away from the part
- / Too much air pressure
- / Not enough material flow on the spray gun
- / Spraying in a hot environment

DRY SPRAY EXAMPLE: ROUGH, SANDPAPER LIKE APPEARANCE



## CORRECTING DRY SPRAY

### TECHNIQUE

- / Ensure that you are no further away than 5" from the part.
- / Maintain a manageable speed to allow coating solvents to transfer onto the part(s).

### SPRAY GUN SETTINGS

- / Adjust fluid volume to ensure you have adequate material being applied to "wet out" the part(s) in one coat.
- / Check that air pressure is no higher than 30 PSI for both H-Series and Elite Series.

### ENVIRONMENT

- / Avoid spraying in extreme conditions (Ideal spraying conditions are between 60°-80°F (15°-26°C) and <70% humidity).

## MISTAKES

If a mistake is made during spraying (such as a run), do not attempt to wipe down the part and re-spray. Rather, remove the wet coating with Brakleen® or Acetone, allow the part to dry, re-sandblast, and re-coat.

## CLEANING UP

Be sure to clean your tools and spray equipment with a compatible cleaning solvent. Contact Cerakote with any questions regarding cleaning solvent recommendations. Dispose of any unused catalyzed Cerakote according to local and state regulations.



Dispose of any unused catalyzed Cerakote and clean all parts of your spray gun.

## DO NOT RETURN ANY UNUSED CATALYZED CERAKOTE TO THE BOTTLE

Pouring catalyzed Cerakote back into the original bottle will render the remaining coating useless.

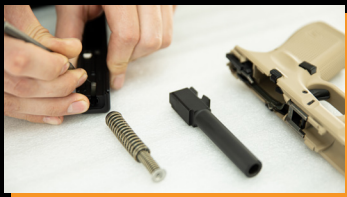
# CURING SCHEDULE

## RECOMMENDED CURE TEMPERATURES

H-Series and Elite Series Cerakote have standard curing temperatures used for performance testing. For curing temperatures specific to your substrate, please see the cure schedule table listed below. Curing schedules specific to colors can be found in the Technical Data Sheet (TDS) under product description.

## FINAL ASSEMBLY

After curing is completed, remove the parts from the oven and allow them to cool. Parts are ready for reassembly and use once they are cool enough to handle.



After curing is completed allow parts from the oven to cool, then assemble.

## CURE SCHEDULE FOR ELITE & H-SERIES

*If you are unsure as to the temperature stability of your parts, contact the manufacturer prior to curing.*

MATERIAL	TEMPERATURE	TIME
Metal H-Series	250° F (121° C)	2 Hours
Metal Elite Series	300° F (148° C)	1 Hour
Plastic and Polymer	150° - 180° (65° - 82° C)	2 hours
Composites i.e. Carbon Fiber or Fiberglass	150° Fahrenheit or 65° Celsius	2 Hours



## FLASH CURE FOR STENCIL APPLICATIONS

For custom applications, a flash cure is required before applying vinyl stencils. Flash cure at 150-180°F (65-82°C) for 10 to 30 minutes, or just to the point of tack free (dry to the touch). Allow parts to cool to room temperature before applying additional colors.

### FLASH CURING (CUSTOMIZATION)

MATERIAL	TEMPERATURE	TIME
Metal, Plastic, Polymer, and Composites	150°-180°F (65°-82°C)	10-30 Minutes

### NOTE

*When using a metallic color* as the base finish, an extended flash cure time of 10 to 15 minutes after the point of tack free (dry to the touch) may be required to ensure coating adhesion when removing stencils with custom applications.



**IWATA SPRAY GUN** Item: SE-138  
**SPRAY GUN STAND** Item: SE-301



**LPH80 1.2 FLUID NOZZLE & NEEDLE** Item: SE-238



**IWATA SPRAY GUN CLEANING KIT**  
Item: SE-258



**CERAKOTE 15" VINYL CUTTER**  
Item: SE-349



**ANTI-STATIC TWEEZER  
7 PIECE SET** Item: SE-366

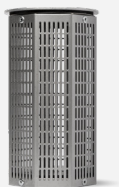


**HIGH BAKE VINYL FILM**  
Item: SE-345



**PLASTIC RAZOR BLADES - 10 PACK**  
Item: SE-367

We recommend the following products for the best results during the Cerakote prep and application process, available at Cerakote.com.



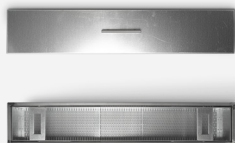
**SHAKE N BLAST CANISTER**

Item: SE-221



**AIR PAINT SHAKER 1 GAL**

Item: SE-369



**CERAKOTE DEGREASING TANK**

Item: SE-272



**PRO SERIES SWATCH SET**

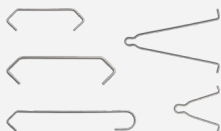
Item: SE-2401



**CERAKOTE MIL THICKNESS GAUGE** Item: SE-321



**CERAKOTE INFRARED THERMOMETER** Item: SE-322



**CERAKOTE HOOK KIT**

Item: SE-195



**HEAVY DUTY SWIVEL HOOK**

Item: SE-387



**SMALL PARTS RACK - 6 CLIP**

Item: SE-346

**SMALL PARTS RACK - 10 CLIP**

Item: SE-347

# TRAINING PROGRAM

Cerakote offers the only one-on-one training program for Cerakote ceramic coatings. Our instructors consult with each customer prior to the training course to custom design each class to meet the specific needs of each customer. Customers can apply any of Cerakote's industry leading ceramic coatings on their own parts, or parts supplied by Cerakote. Courses are taught at Cerakote HQs training facility in White City, Oregon, or onsite for qualified applicants. While every class is custom tailored to meet each customer's needs, below are topics typically covered in most courses.

## WHAT WILL I LEARN?

- Metal preparation
- Gas out
- Racking techniques
- Coating selection for various applications
- Basic to Advanced coating application
- Proper curing techniques and schedules
- Problem solving and troubleshooting defects
- Proper equipment and operation
- Re-works
- Cost analysis
- Marketing strategies
- Stenciling & camo techniques

*For more information about the Cerakote Training Program, give us a call at 1-866-774-7628*

## CLASS LOCATION

White City is located in Southern Oregon. We are 5 miles from Medford, Oregon, and approximately 280 miles from Portland, Oregon.

7050 6<sup>th</sup> Street  
White City, OR 97503



## CLASS LOCATION

Rogue Valley International Airport (MFR) is located 6 miles from NIC and provides daily flights from several major west coast airports. All major rental car companies are located at the Rogue Valley International Airport.

## LODGING

Cerakote has negotiated discounted rates with several hotels in close proximity to our facility. Information can be found at [cerakote.com](http://cerakote.com)

# CONTACT INFORMATION

If at any point during the Cerakote application you have a question, please contact us at [info@cerakote.com](mailto:info@cerakote.com), or call us toll free at 1-866-774-7628.



**STAY CONNECTED!** Subscribe to Cerakote's emails at [Cerakote.com](http://Cerakote.com) to receive the latest news, information, and specials.

**Additional Training Videos** - [YouTube.com/Cerakote](https://www.youtube.com/Cerakote)

**Web address** - [www.Cerakote.com](http://www.Cerakote.com)

**Facebook** - [Facebook.com/Cerakote](https://www.facebook.com/Cerakote)

**Instagram** - @Cerakote

**Twitter** - @CerakoteFinish

**Pinterest** - Cerakote Coatings

**SDS Sheets** - Downloads section at [Cerakote.com](http://Cerakote.com)

# CERAKOTE<sup>®</sup>

---



---

ELITE & H-SERIES  
TRAINING MANUAL

AN INNOVATION OF



V.WEB01112022

866.774.7628 | 7050 Sixth Street | White City, Oregon 97503